

Wenlock & Taylor



Purves Road, Kensal Green

London, NW10 5ST

Price £1,595,000

This very impressive Victorian style End of Terrace (Corner) house has been extended to the rear/side and also loft converted/ upgraded to a high standard. Now boasting 1685 sq.ft (157 sq.m) approx of bright and airy accommodation comprising 4 bedrooms (one with en-suite shower/wc and two with fitted wardrobes), 25ft through lounge with period fireplace/features, 320 sq.ft approx kitchen with island, integrated appliances, megafluo water system, underfloor heating, skylights and sliding patio doors, family bathroom, 2 separate wc's and south facing rear garden/patio. This fine home is situated close to Kensal Green (Lioness & Bakerloo Line) station, Harrow Road bus routes into the City/West End and near to the deli's/bars and (Mildmay Line) station at Kensal Rise. Tenure is Freehold and Council Tax Band is 'D' (London Borough of Brent).

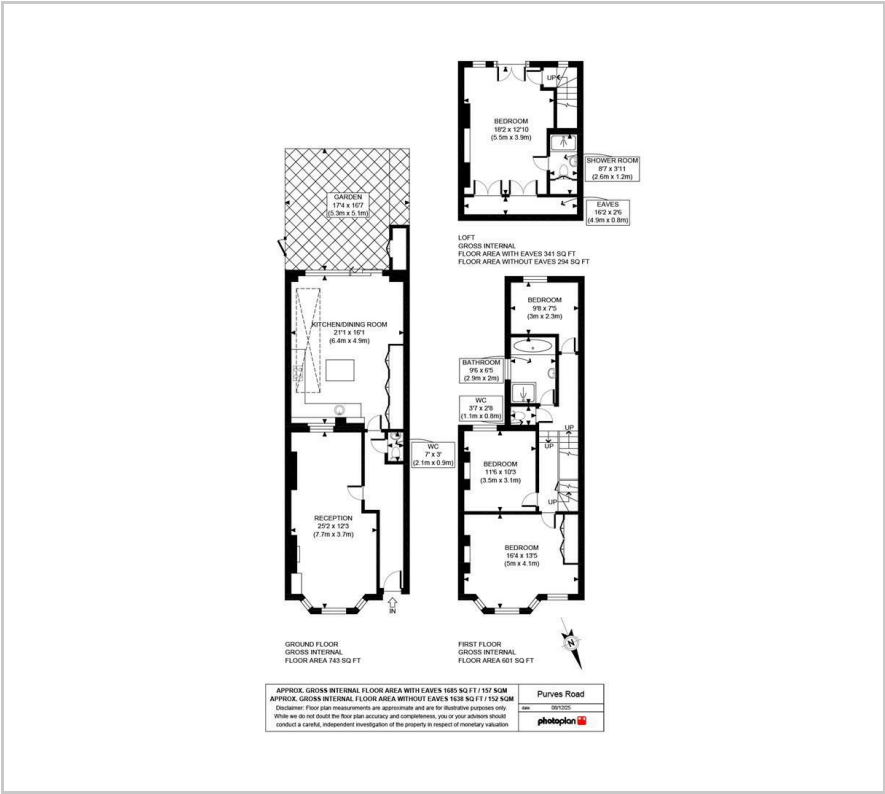
- IMPRESSIVE 1685 sq.ft (157 sq.m) VICTORIAN END OF TERRACE (CORNER) HOUSE ON THREE FLOORS
- 4 BEDROOMS (TWO WITH FITTED WARDROBES & ONE WITH EN-SUITE BATHROOM/WC)
- REAR/SIDE EXTENDED KITCHEN/DINING ROOM WITH UNDERFLOOR HEATING
- WOOD FLOORING & DOUBLE GLAZED WINDOWS WITH SHUTTERS
- SOUTH FACING REAR GARDEN
- SITUATED CLOSE TO KENSAL GREEN STATION

Viewing

Please contact our Wenlock & Taylor Office on 020 8969 0122 if you wish to arrange a viewing appointment for this property or require further information.



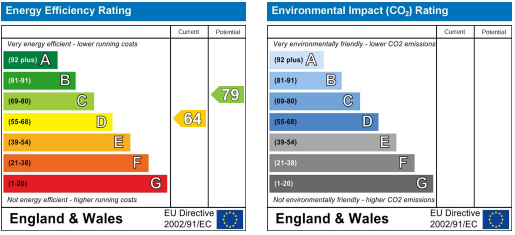
Floor Plan



Area Map



Energy Efficiency Graph



These particulars, whilst believed to be accurate are set out as a general outline only for guidance and do not constitute any part of an offer or contract. Intending purchasers should not rely on them as statements of representation of fact, but must satisfy themselves by inspection or otherwise as to their accuracy. No person in this firms employment has the authority to make or give any representation or warranty in respect of the property.